



Long Island Sound Resilience Support Programs

Sara Powell, New York Sea Grant

June 25, 2026

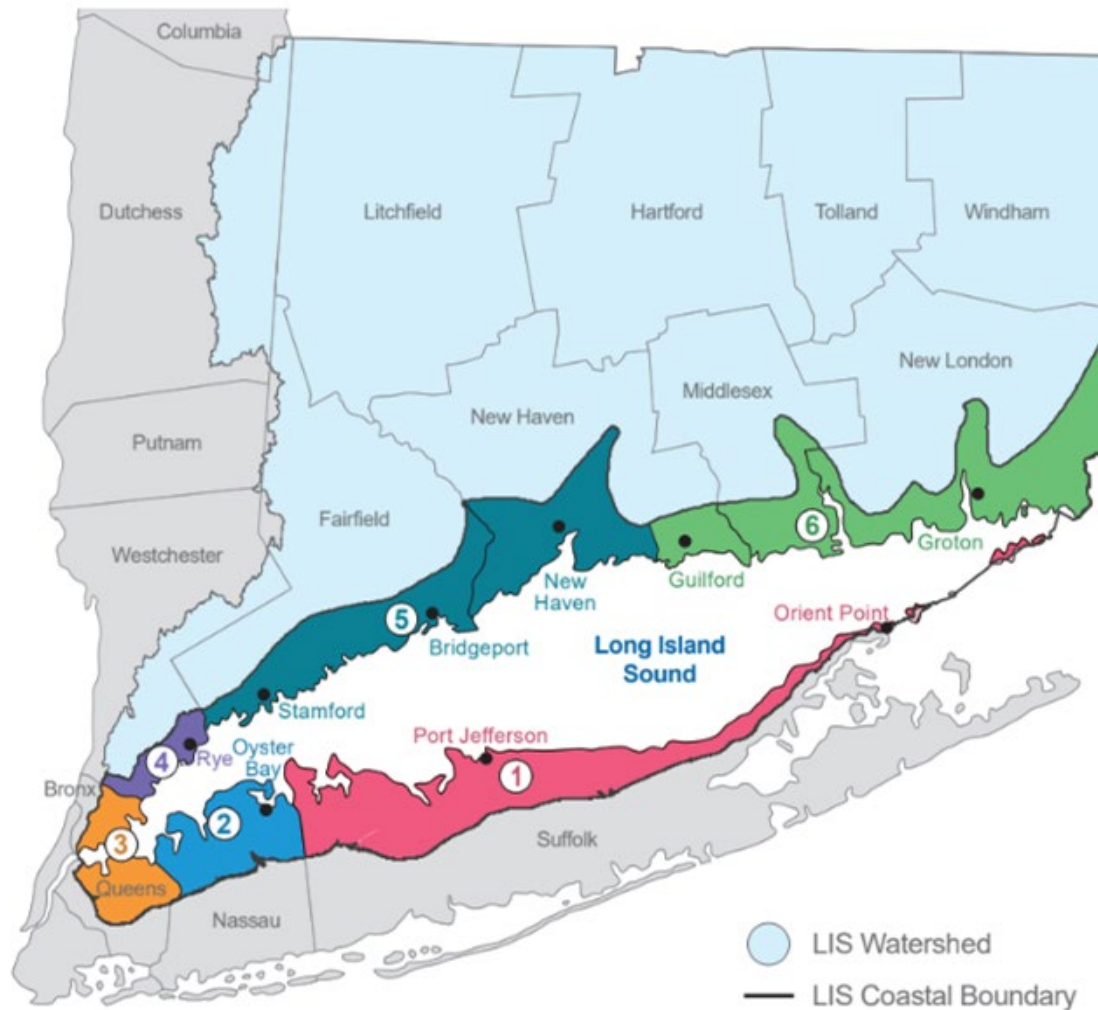




WHO WE ARE

The Long Island Sound Partnership is a group of organizations, agencies, scientists, and community members working together to protect and restore Long Island Sound. We support clean waters, healthy habitats, thriving wildlife, resilient coasts, and an engaged public.

Sustainable & Resilient Communities (SRC) Extension Professionals Team



1

Suffolk County
Elizabeth Hornstein



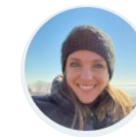
2

Nassau County
Sarah Schaefer-Brown



3

New York City
Ben Goldberg



4

Westchester County
Sara Powell



5

Western CT
Deb Visco Abibou



6

Eastern CT
Sarah Schechter



LONG ISLAND SOUND
PARTNERSHIP

Long Island Sound Resilience Grant Writing Assistance Program

Goal: *To secure funding for sustainable and resilience-focused projects*

Type of Technical Assistance:
Grant Preparation and Writing Support

Launched: November 2022



Award Amount

- Up to \$9,950 per application **directly to contractor**
- Applicants can submit multiple applications but each application should focus on one discrete project

Match

- None required

Application Period

- Open on a rolling basis

Submission Options

- Google form, email, mail

Supported Activities

- Budget preparation, mapping
- Cost-benefit analysis
- Writing & narrative development
- Application preparation & submission

Eligible Applicants

- Municipalities, nonprofits, community groups, etc.

Project Criteria

- Must impact communities within the Long Island Sound coastal boundary
- Must advance actions of the LIS Partnership CCMP

- Sustainability/resilience plans or watershed plans**
- Green infrastructure, stormwater management, and low-impact development**
- Infrastructure improvements to increase resilience to sea level rise, storm surge, and intense storms and flooding** (generally excluding seawalls, groins, jetties, and bulkheads)
- Right-sizing of culverts or dam removal**
- Nature-based solutions** (e.g., living shorelines, wetland restoration, shellfish reef restoration, eelgrass restoration; generally excluding beach nourishment)
- Retreat, relocation, or land acquisition to protect floodplain habitat**
- Public engagement** relating to advancing sustainable and resilient communities

Applicant Information

- Name of organization or municipality
- Point of contact, address

Needs & Funding Request

- Consultant
- Describe type(s) of support needed
- **Include a budget and budget justification**

Funding Opportunity


- Identify targeted funding opportunity(ies)
- Identify who will receive the funds from the targeted opportunity(ies)

Project Description

- Location of project
- Describe how the project will advance sustainability & resilience
- Identify the project type (planning, design, implementation) and associated activities or desired outcomes for which funding is needed
- List the project team, including the lead applicant and any co-applicants
- *(Optional)* Describe any community engagement and/or relevant grant application history to date

GWA Program details




Resilience Steps Resources & Tools Connect Search

Funding Database

Find funding for your project

Filters

Select one or more of the filters below to find relevant tools and resources for your needs

Status: Select a Status

Planning Phase: Select a Planning Phase

Location: Select a Location

Topic: Select a Topic

Eligibility: Select an Applicant Type

Reset Filters
Apply Filters

Funding
Open: Due on Jun 27, 2025
0 days

\$50,000-\$250,000

Suffolk County Water Quality Protection and Restoration Program and Land Stewardship Initiative (WQPRP)

The Suffolk County Water Quality Improvement Division works to protect and improve Suffolk County's ground and surface waters. The WQPRP provides funding to protect and restore surface and groundwater resources througho...

New York State

Habitat
Nature-based Solutions
Stormwater Management

Water Quality
Infrastructure
Waste Management

Green Infrastructure
View Details

Funding
Open: Due on Jul 1, 2025
4 days

\$50K - \$500K (or 30% of appraised value)

The Land Capital Grant Program - Round 3

The Land Capital Grant Program (LCG) is designed to bridge funding gaps and accelerate the protection of valuable conservation lands. CLCG will prioritize projects that...

Connecticut State

Habitat
Land Use
Water Quality
Recreation & Access

View Details

Grant writing assistance available! - Click here to learn more

Funding
Open: Due on Jul 31, 2025
4 weeks

NYSDOS Smart Growth Community Planning Grant Program

The NYS Department of State (NYSDOS) is soliciting applications from eligible towns, villages, cities, counties, regional planning entities and not-for-profit organizations to support the creation, or modification of comprehensi...

New York State

Land Use
Sea Level Rise
Stormwater Management
Infrastructure

Planning
Funding/Grants
Policies & Regulations

View Details

Grant writing assistance available! - Click here to learn more

Funding
Open: Due on Jul 31, 2025
4 weeks

Max award of \$50-75K

Non-Agricultural Nonpoint Source Planning and Municipal Separate Storm Sewer System (MS4) Mapping Grant (NPG)

Funding Database





LONG ISLAND SOUND
PARTNERSHIP

Long Island Sound Resilience Planning Support Program

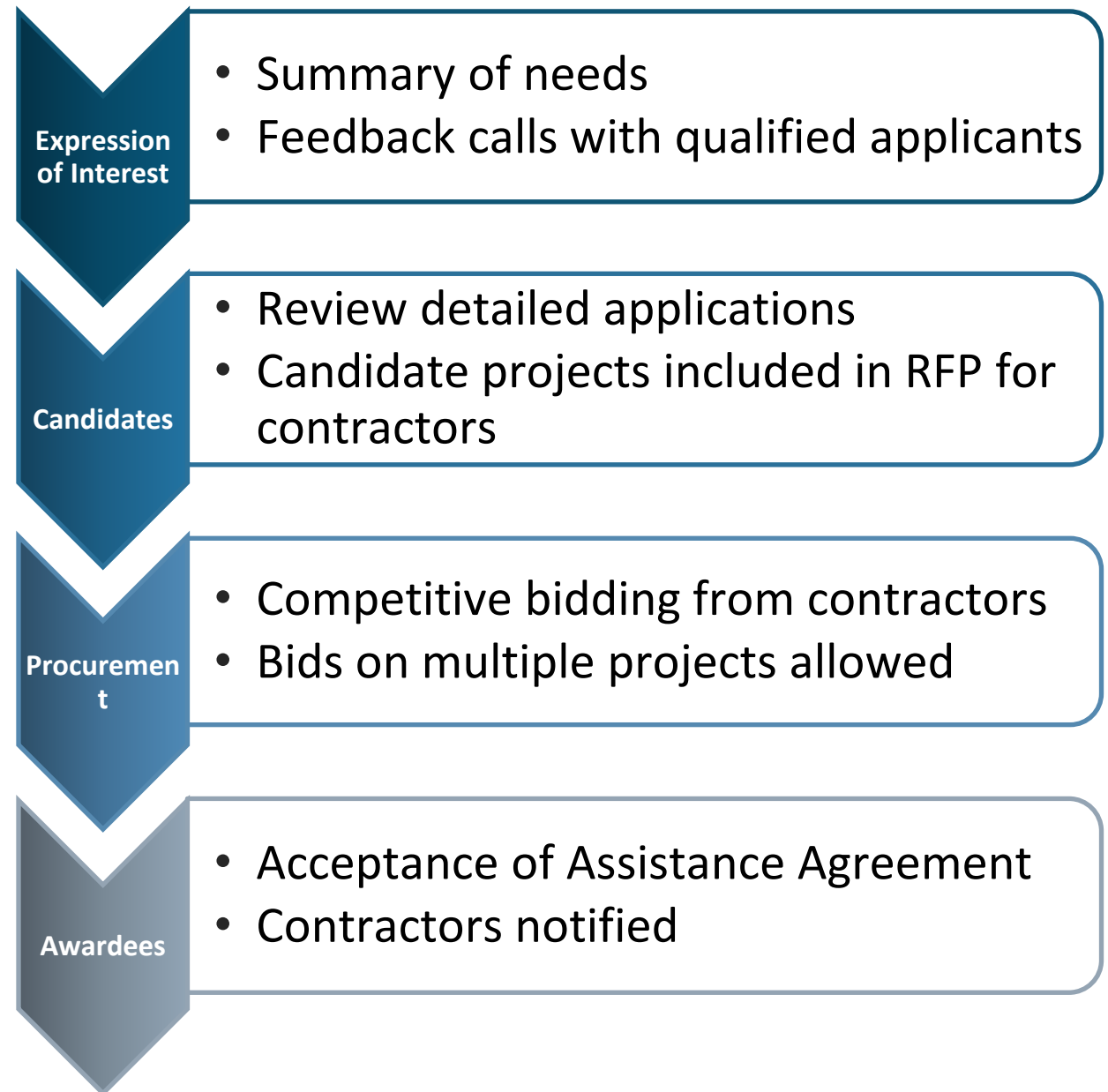
Goal: *To advance sustainable and resilience-focused projects to a design or implementation grant-ready phase*

Type of Technical Assistance:
Project scoping and planning

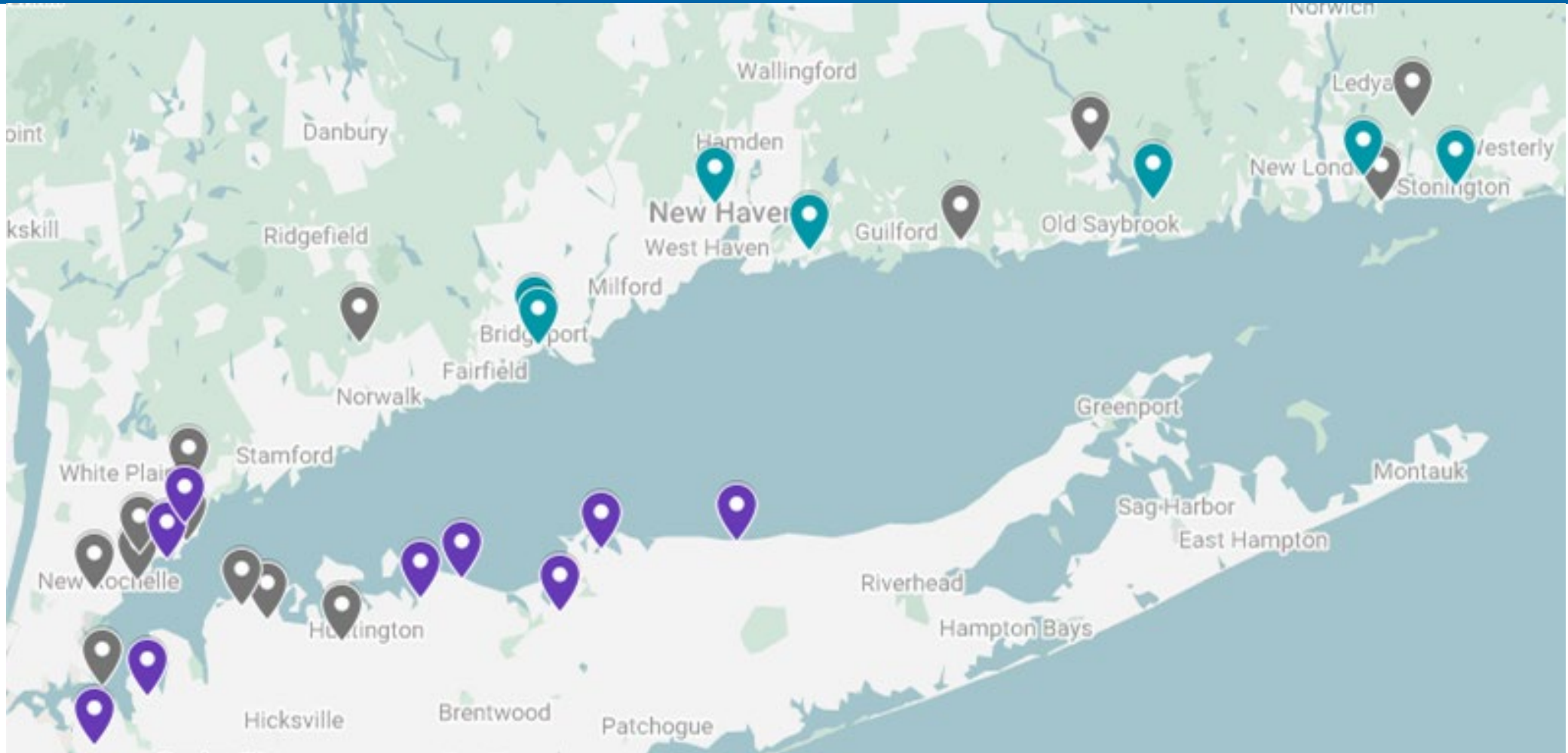
Launched: October 2023



- **Funding Available**
 - ~\$1M for NY
- **Award Amount**
 - Not specified, range to date: \$35k-\$115k
- **Match**
 - None required
- **Application Period**
 - Anticipated opening of 4th round: February 2027
- **Eligible Applicants**
 - Municipalities, nonprofits, community groups, etc.



1st & 2nd Round Awardees of Planning Support Program



In the first two rounds of the Program, New York Sea Grant and Connecticut Sea Grant have awarded ~\$2.1 million in planning support to support resilience-focused projects in 31 coastal communities in the Long Island Sound region (19 in NY & 12 in CT)

Want to learn more?

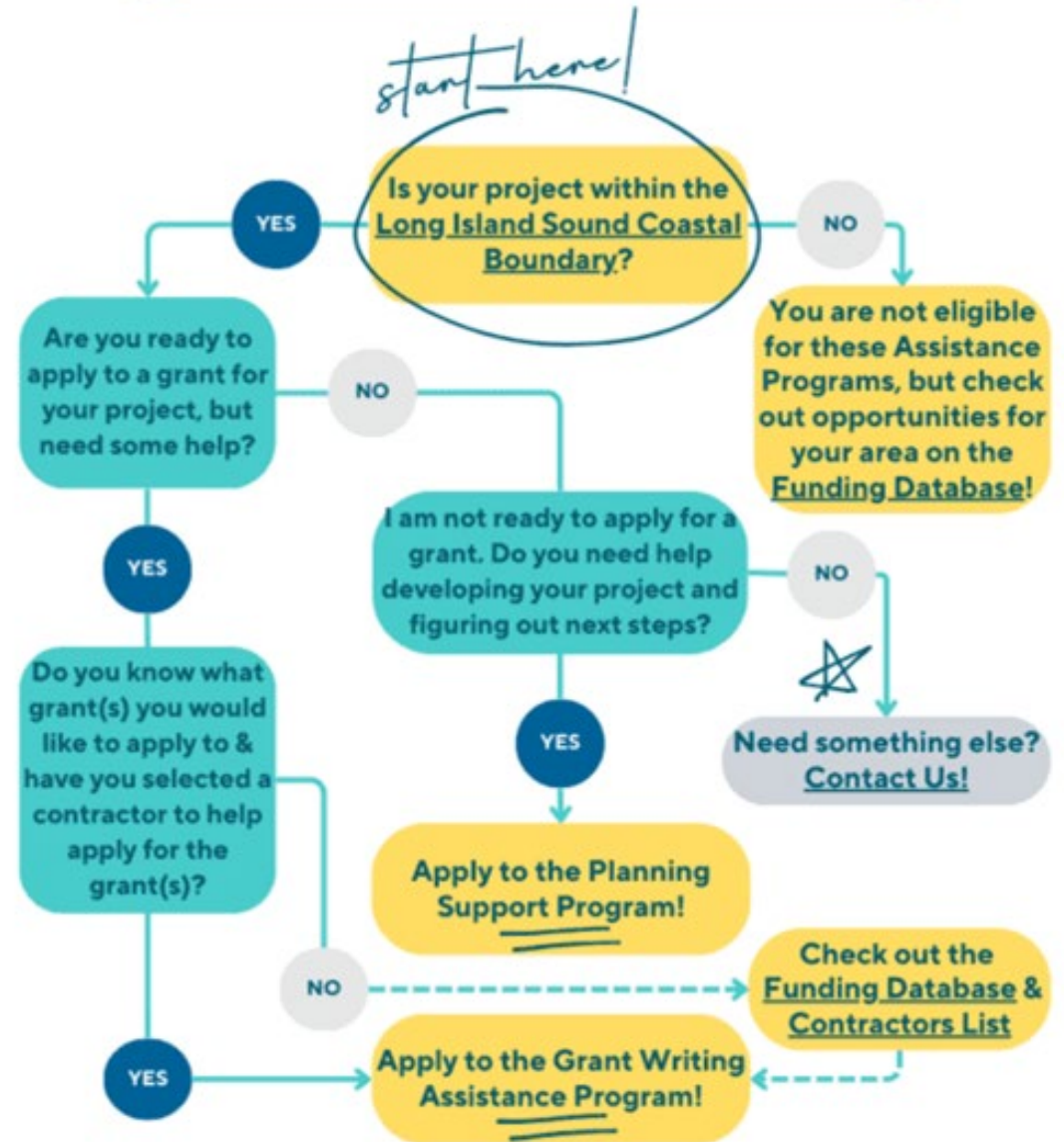
Visit our *Assistance Programs* page on the Long Island Sound Resilience Resource Hub:



lisresilience.org/assistance-programs

What Assistance Program is right for me?

Click on the image to interact





LONG ISLAND SOUND
PARTNERSHIP

Climate Smart Communities Certification Crosswalk

www.nyseagrant.org/cscrosswalk

Climate Smart Communities *Crosswalk* How to Use This Tool



Climate Smart
Communities

1 Get a Big-Picture Understanding

Browse the "Water Resource Programs Overview."

Recommended Audience:
General public, elected
officials, municipal staff

1. Use the right-hand column of the chart to see which pledge elements (categories) of the CSC Certification program overlap the most with the 6 water resources programs.
2. View the totals in the bottom row of the chart to see which of the 6 programs your community could complete to gain the most points in the CSC Certification program.

2 See Program-by-Program Details

Review the 6 water resources program PDFs.

Recommended Audience:
Code officials, planners,
program staff

1. View the left-hand columns of the chart to see which CSC certification actions are relevant to a particular program.
2. View the checkmarks to see where your community could gain points in the CSC Certification program, by completing components of the water resource program. View the right-hand column for a summary.
3. View the totals in the bottom row of the chart to see which components of the water resource program could result in the most CSC points for your community.

3 Take a Deep Dive

Complete the online interactive surveys.

Recommended Audience:
Code officials, planners,
program staff

1. Take the survey(s) for any water resources program(s) you are interested in exploring. Based on your responses, the surveys provide you with information about where your community might gain points in the CSC Certification program.
2. Add your email at the end of the survey to view your results.

For more information, please contact Mary Austerman, New York Sea Grant, at mp357@cornell.edu.



Walk through the Climate Smart
Communities Crosswalk online!
www.nyseagrant.org/cscrosswalk

Climate Smart Communities *Crosswalk*

Water Resource Programs Overview



CSC Pledge Element	Local Hazard Mitigation Plan (HMP)	Community Rating System (CRS)	Coastal Erosion Hazard Area (CEHA) Communities	Drinking Water Source Protection Program (DWSP2)	Local Waterfront Revitalization Program (LWRP)	Municipal Separate Stormwater Sewer System (MS4)	# of Relevant CSC Actions per Pledge Element
	NYS DHSES	FEMA	NYS DEC	NYS DOH & DEC	NYS DOS	NYS DEC	
1 Build a climate-smart community	1	1	0	1	0	1	4
2 Inventory emissions, set goals, and plan for climate action	0	0	0	0	0	0	0
3 Decrease energy use	0	0	0	0	0	1	1
4 Shift to clean, renewable energy	0	0	0	0	0	0	0
5 Use climate-smart materials management	0	0	0	0	0	1	1
6 Implement climate-smart land use	0	7	2	6	8	3	26
7 Enhance community resilience to climate change	8	15	3	7	5	2	40
8 Support a green innovation economy	0	0	0	0	1	0	1
9 Inform and inspire the public	4	3	0	2	3	2	14
10 Engage in an evolving process of climate action	0	0	0	0	0	0	0



Climate Smart Communities *Crosswalk*

Local Waterfront Revitalization Program (LWRP)



CSC Pledge Element	CSC Certification Action	LWRP Components					# of Relevant CSC Actions per Pledge Element
		Community Involvement	Inventory & Analysis	Policies	Proposed Land & Water Uses & Proposed Projects	Techniques for Local Implementation	
6 Implement climate-smart land use	<i>Comprehensive Plan with Sustainability Elements</i>	✓	✓	✓	✓		8
	<i>Smart Growth Policies</i>					✓	
	<i>Unified Solar Permit</i>					✓	
	<i>Green Parking Lot Policies</i>					✓	
	<i>Planning for Biking & Walking</i>				✓		
	<i>Natural Resources Inventory</i>		✓				
	<i>Local Forestry Program</i>					✓	
	<i>Zoning for Protection of Natural Areas</i>					✓	



The CSC certification action could be achieved by completing the plan/program, with little to no extra effort.



The CSC certification action could be achieved by completing the plan/program, under certain conditions and/or with some extra effort.

N/A

No CSC certification actions within the Pledge Element are relevant, OR the CSC certification actions within the Pledge Element could not be achieved without significant additional effort and/or external funding beyond the plan/program.



LONG ISLAND SOUND
PARTNERSHIP



Thank you!

Sara Powell, New York Sea Grant

slp285@cornell.edu

